

Installing Mach3 for the BenchRouter 1000

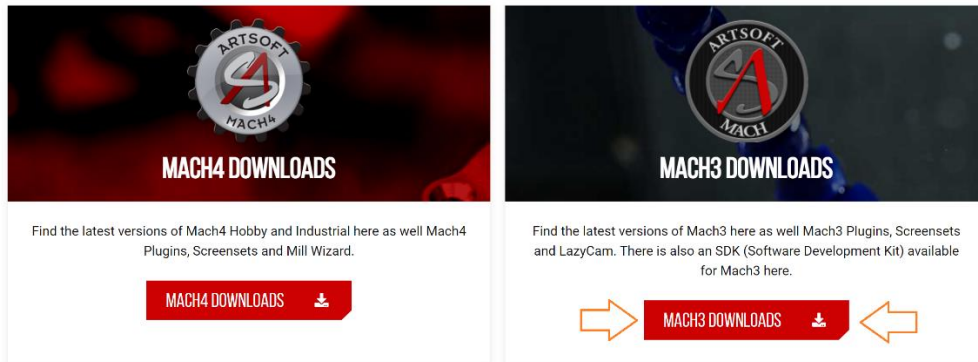
Don't connect the mill or power it up until specified below!

Do not substitute the Intelitek.xml file from another machine. Each .xml is calibrated the machine.

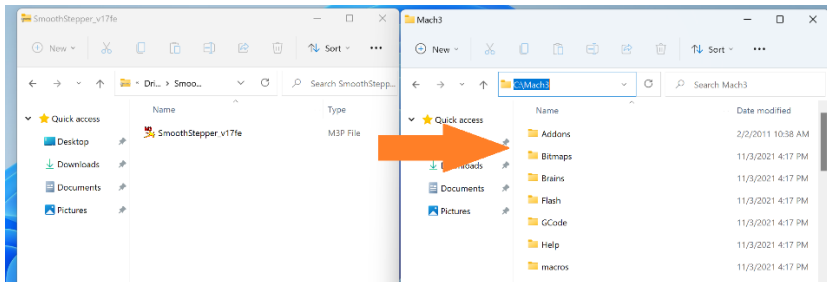
You will need administrator rights to install the software and drivers.

1. Go to <http://www.machsupport.com/software/downloads-updates/> and select Mach3

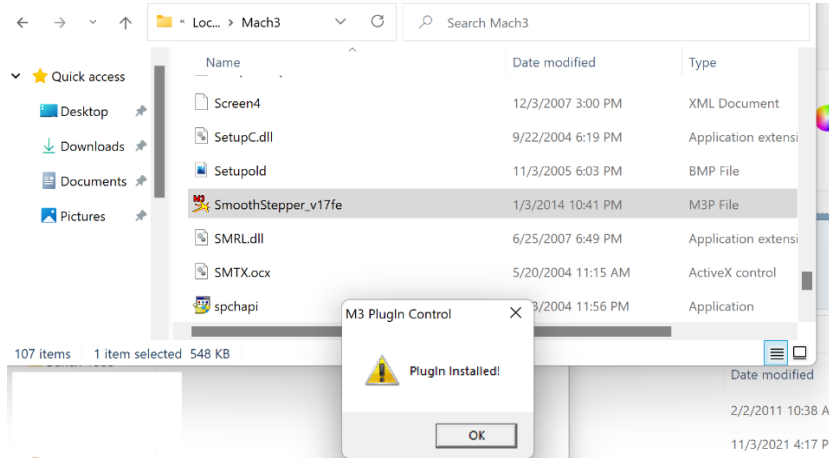
DOWNLOADS & UPDATES



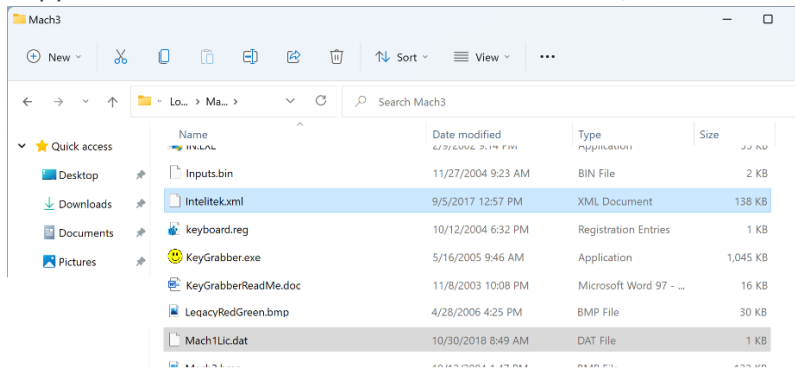
2. Install Mach3 accept all prompts do not change the path. Don't open Mach3.
3. Mach3 Forces Reboot
4. Download: https://warp9td.com/files/SmoothStepper_v17fe.zip
5. Extract the SmoothStepper_v17e to a folder and move the file to C:\Mach3



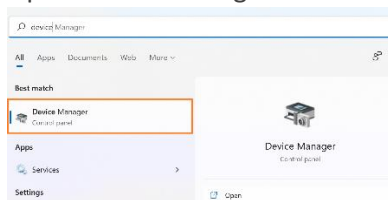
6. Extract the file to C:\Mach3 and then double click SmoothStepper_v17fe.m3p, then click ok



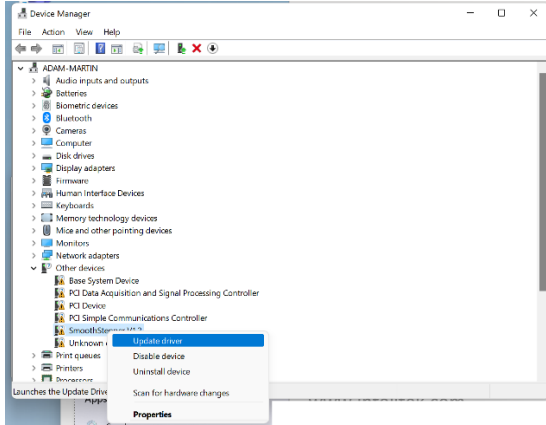
7. Copy the file Mach1Lic.dat from the **USB Drive** to C:\Mach3
8. Copy the file Intelitek.xml from the **USB Drive** to C:\Mach3



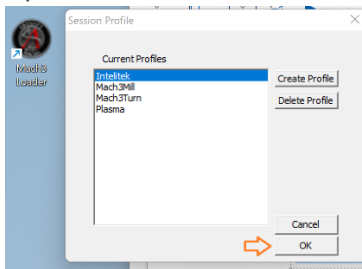
9. Download: https://warp9td.com/files/Software/USS%20Drivers/USS_USB_Driver_2_12_06_x64_Windows_7_8_10.zip
10. Extract USS_USB_Driver to a folder.
11. Connect the BenchRouter to a USB port on the computer and turn on the router.
12. Open Device Manager



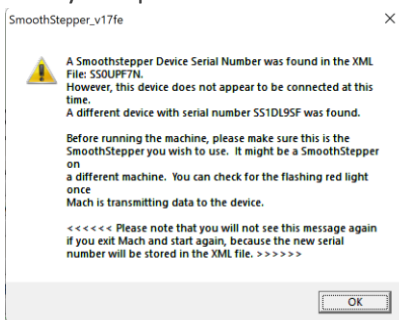
13. Under Other Devices Right Click on Smooth Stepper and select Update



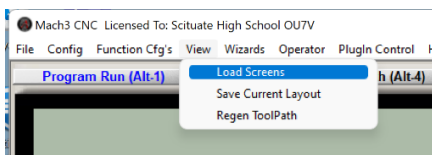
14. Point Windows to the path of the USS_USB_Driver_xxx folder
15. Open Mach3 Loader from the Desktop, select Intelitek and click OK.

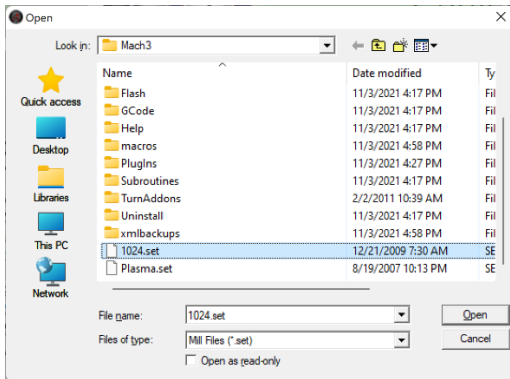


16. it may complain about the serial number being wrong, this is ok.

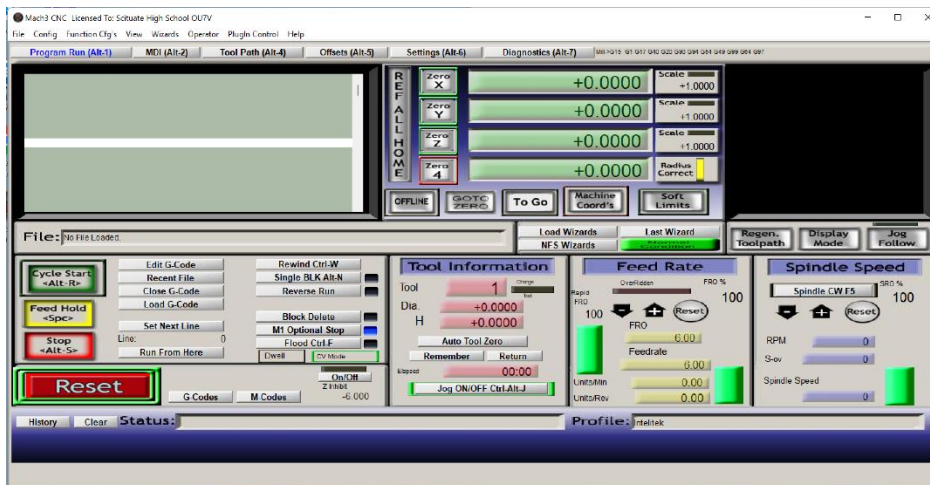


17. If the screen set is blank looks incorrect. Goto View Menu look for 1024.set





18. Click **REF ALL Home** and the machine should move to Home.



19. The machine control screen should look like above after a successful install.